



HOKKAIDO  
SUMMER  
INSTITUTE

# Mammalian Brain Morphology: *From specimen collection to mathematical modeling*

In order to understand the brain, we need to study its morphology.

In this course students will be introduced to an integrated set of multidisciplinary methods to better understand brain morphology of large mammals:

## Neuroanatomy



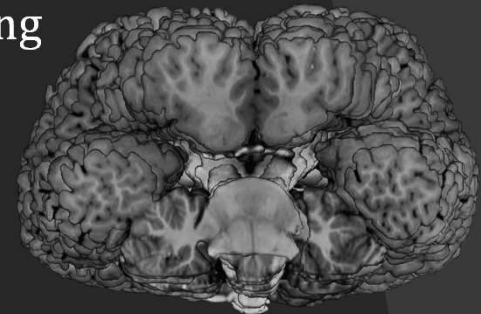
**Dr. Nina PATZKE**  
Assistant Professor  
IAHE, Hokkaido University



## Magnetic Resonance Imaging (MRI)



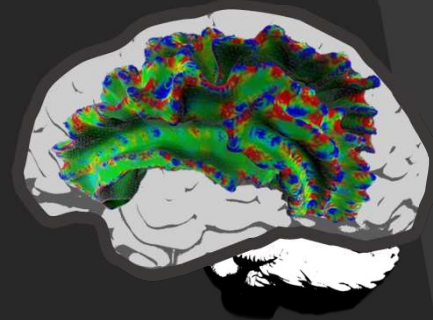
**Dr. Khin Khin THA**  
Associate Professor  
Faculty of Medicine,  
Hokkaido University



## Theoretical modelling



**Dr. Bruno MOTA**  
Assistant Professor  
Faculty of Physics,  
UFRJ, Brazil



**Schedule:** June 21<sup>st</sup> – June 25<sup>th</sup>, 2021

**Level:** Graduate **Credits:** 1 **Language:** English

**Course Number:** G019 **HU students Course Code:** 101627